

Zoning:	Industrial, Commercial
Topography:	Flat
Setting:	Agricultural Land
Within City Limits:	Yes
Site Dimensions:	1,320' x 1,950'
Specialty Features:	TIF District
Last Updated:	May 9, 2025

Economic Development Contact

Tod Faris
Kossuth/Palo Alto County Economic Development Corporation
106 S Dodge St, Suite 210
Algona, IA 50511
(515) 295-7979 | kcedc@kossuthia.com

Gretchen Reichter
City of Emmetsburg
14 N Lawler St
Emmetsburg, IA 50536
(715) 415-1142 | greichter@emmetsburg.com

Property and Area Description

Kueck Industrial Park is located within the City of Algona, IA, along the eastern edge of the corporate limits. The property lies between US HWY 18 and the Canadian Pacific Railroad. The industrial park is approximately 55 acres, with 21.74 acres available for immediate development. There are 7 accessible lots ranging in area from 1.72 to 8.53 acres. A 26.35 acre lot is also available for future development. As a part of the industrial park development, Snap-on Drive is being reconstructed and extended to facilitate increased use and access. Water, sanitary, stormwater, natural gas and electric utilities have been constructed and made available along the street right-of-way. The City of Algona understands the need and requirement for modern communication services. AMU provides fiber optic service to the industrial park to meet those needs.

Population

	8,569 10 Mile Radius	16,835 20 Mile Radius	42,188 30 Mile Radius
--	--------------------------------	---------------------------------	---------------------------------

Source: ESRI®, 2024

Households

	3,726 10 Mile Radius	7,232 20 Mile Radius	18,151 30 Mile Radius
--	--------------------------------	--------------------------------	---------------------------------

Source: ESRI®, 2024

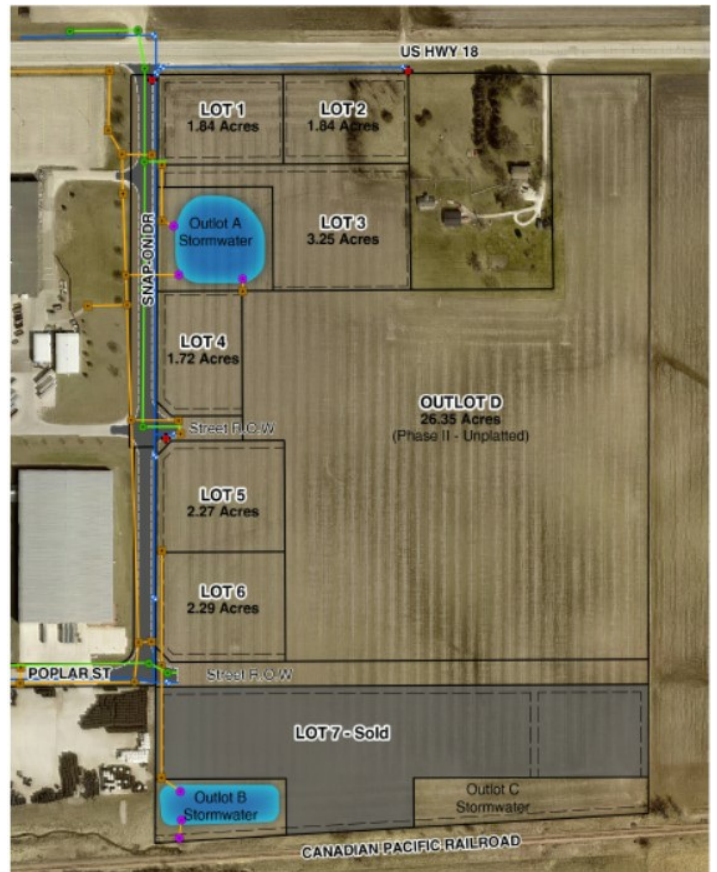
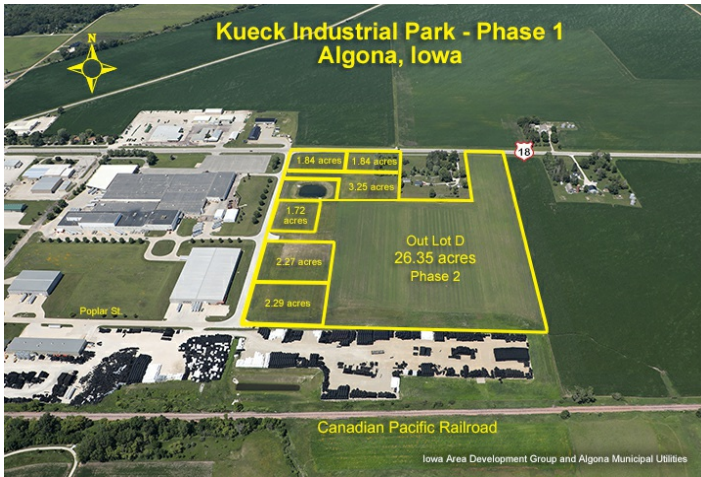
Transportation

Nearest Highway: US-18 & US-169 (.5 mi.)
Nearest Interstate: Interstate 35 (45 mi.)
Ingress/Egress Notes: Site is located along Highway 18.
Nearest Airport: Algona Municipal Airport (3 mi.)
Nearest Commercial Airport: Fort Dodge Regional Airport (40 mi.)
Rail Served: Possible
Rail Served By: CPKC Railway
Rail Accessible: Unknown
Rail Infrastructure in Place: Unknown
Rail Contact: Peiter Hjertstedt
Rail Contact Phone: (816)955-8014
Rail Contact Email: peiter.hjertstedt@cpkcr.com

Utilities

Electric: Algona Municipal Utilities
Natural Gas: MidAmerian Energy
Water: Algona Municipal Utilities
Sewer: City of Algona
Telecommunications: Algona Municipal Utilities

Property Images



Bruce Hansen | V.P. Business Development | Iowa Area Development Group
2600 Grand Avenue, Suite 430 | Des Moines, IA 50312 | (800) 888-4743 | bhansen@iadg.com