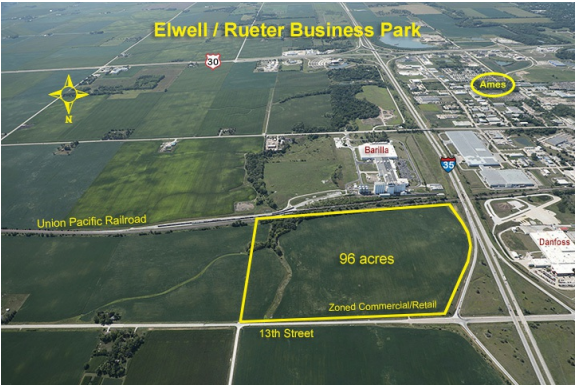


E. 13th Street & I-35 Reuter Business Campus
(Retail/Commercial Site)
3312 E. 13th Street | Ames, IA | US | Story County
Available Acres: 96 |



Zoning:	Commercial, Retail
Topography:	Flat
Setting:	Agricultural Land
Within City Limits:	Yes
Sale Price Note:	Contact Realtor
Last Updated:	Jan 2, 2024

Economic Development Contact

Dan Culhane
Ames EDC
304 Main Street
Ames, Iowa 50010
(515) 232-2310 | dan@ameschamber.com

Realtor/Owner Contact

Chris Murray
Denny Elwell Company
515-975-2577 |
cmurray@dennyelwellcompany.com

Property and Area Description

96 acres for sale at 13th Street and I-35. The 96 acre parcel is zoned commercial/retail and borders both E 13th St. and I-35.

Population

	89,947	478,461	1,012,755
	10 Mile Radius	30 Mile Radius	50 Mile Radius

Source: ESRI®, 2024

Households

	35,729	187,860	404,881
	10 Mile Radius	30 Mile Radius	50 Mile Radius

Source: ESRI®, 2024

Transportation

Nearest Highway: US-30 (2.1 mi.)
Nearest Interstate: I-35 (0.0 mi.)
Nearest Airport: Ames Municipal Airport (5.1 mi.)
Nearest Commercial Airport: Des Moines International Airport (38.8 mi.)
Rail Served: Possible
Rail Served By: Unknown
Rail Accessible: Yes
Rail Infrastructure in Place: Yes

Utilities

Electric: City of Ames Electric Services
Natural Gas: Alliant Energy
Water: City of Ames
Sewer: City of Ames

Property Images

