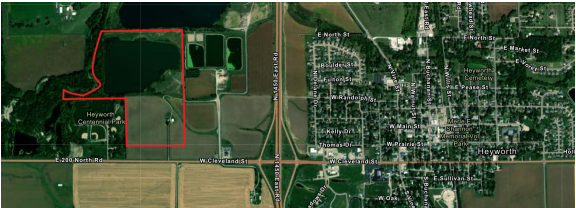


Heyworth 92 Acres

Heyworth | Heyworth, IL | US | McLean County

Available Acres: 92.89 |



Last Updated:

Feb 27, 2025

Economic Development Contact

Patrick Hoban

B-N Economic Development Council

200 W. College Ave Ste. #402

Normal, IL 61761

(309) 452-8437 | patrick@bnedc.org

Property and Area Description

92.89 acres available. This parcel not in the Village of Heyworth but could be annexed in. Not all is usable as a large portion is in flood plain
https://www.heyworth-il.gov/for_business/economic_development/index.php

Population

	22,691	178,457	260,792
	10 Mile Radius	20 Mile Radius	30 Mile Radius

Source: ESRI®, 2024

Households

	9,104	73,699	106,735
	10 Mile Radius	20 Mile Radius	30 Mile Radius

Source: ESRI®, 2024

Transportation

Nearest Highway: Rt. 51, Rt. 136
Nearest Interstate: I-39
Nearest Airport: Central Illinois Regional Airport (BMI) (18 mi.)
Nearest Commercial Airport: Central Illinois Regional Airport (BMI) (18 mi.)
Rail Served: Unknown
Rail Served By: Unknown
Rail Accessible: Unknown
Rail Infrastructure in Place: Unknown