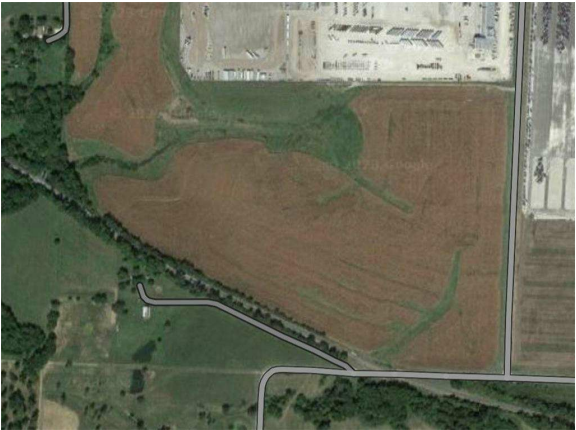


Reich Rd  
Reich Rd | Odessa, MO | US | Lafayette County  
Available Acres: 60.26 | Sale Price: \$2,624,925



Zoning:	
Sale Price:	\$2,624,925
Last Updated:	May 30, 2025

Economic Development Contact

Shawna Davis  
City of Odessa, MO  
228 S 2nd Street  
Odessa, MO 64076  
(816) 608-5651 |  
Shawna.Davis@CityofOdessaMO.com


Realtor/Owner Contact

Heritage Realty  
| info@heritagerealtyodessa.com

Property and Area Description

60.26 acres of COMMERCIAL POTENTIAL. There are other large scale commercial businesses in the area. Come and be part of a great development. Property can be SUBDIVIDED into smaller parcels. Price will range from \$.85 to \$2.00 per square foot. Lot pricing will be determined by location vicinity, number of square feet/acres, etc. Look to expand your business here! The growth potential is unlimited. Access is off of Reich Road.

Population

	<b>202,513</b> 20 Mile Radius	<b>719,687</b> 30 Mile Radius	<b>2,409,173</b> 60 Mile Radius
---	----------------------------------	----------------------------------	------------------------------------

Source: ESRI®, 2024

Households

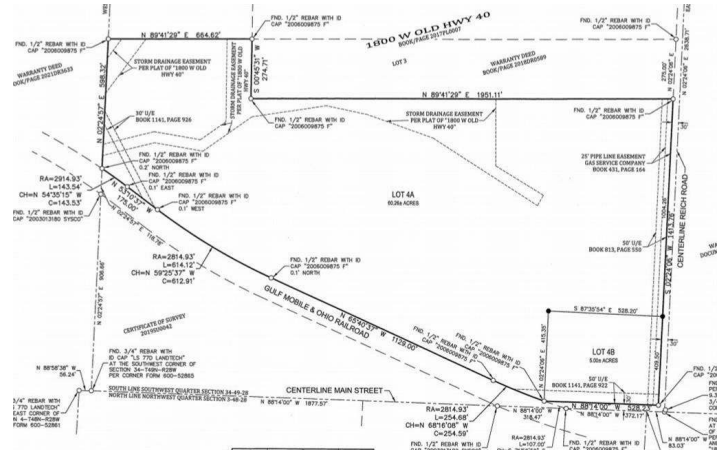
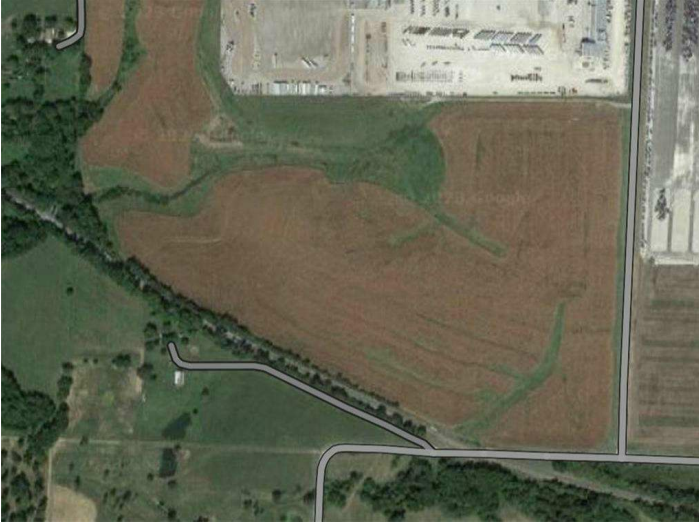
	<b>76,072</b> 20 Mile Radius	<b>281,373</b> 30 Mile Radius	<b>958,841</b> 60 Mile Radius
---	---------------------------------	----------------------------------	----------------------------------

Source: ESRI®, 2024

Transportation

Rail Served: No  
Rail Accessible: No  
Rail Infrastructure in Place: Unknown

## Property Images



Subash Alias | CEO | Missouri Partnership  
120 S. Central Ave, Suite 1535 | Saint Louis, MO 63105 | (877) 725-0949 | [Subash@MissouriPartnership.com](mailto:Subash@MissouriPartnership.com)