

Zoning:	Industrial, Commercial
Topography:	Sloped
Adjacent Available Acres:	100+
Setting:	Agricultural Land
Within City Limits:	Yes
Specialty Features:	Enterprise Zone
Sale Price:	\$3,685,000
Sale Price Note:	55,000/acre, Negotiable
Last Updated:	Jan 7, 2025

Economic Development Contact

Ben Vickers
Springfield Area Chamber of Commerce
202 s john q hammons pkwy
Springfield, Missouri 65801
(417) 296-3267 | ben@springfieldchamber.com

Property and Area Description

Property owned by City of Springfield. Greenfield property adjacent to highway, perfect for industrial use.

Population

	416,718 20 Mile Radius	498,458 30 Mile Radius	868,570 60 Mile Radius
---	---------------------------	---------------------------	---------------------------

Source: ESRI®, 2024

Households

	173,417 20 Mile Radius	204,889 30 Mile Radius	351,789 60 Mile Radius
---	---------------------------	---------------------------	---------------------------

Source: ESRI®, 2024

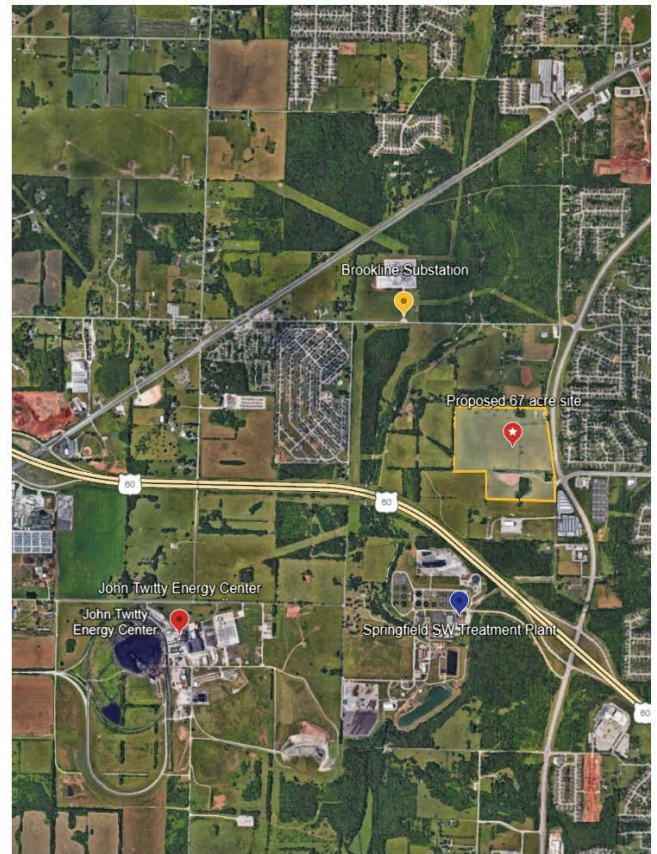
Transportation

Nearest Highway: US 60 (0 mi.)
Nearest Interstate: I-44 (6 mi.)
Ingress/Egress Notes: Exit property via immediate traffic light onto West Bypass (Hwy 160), 0.6 miles to James River Expressway exit, (Divided four lane, US 60), follow for 5.5 miles until I-44 interchange.
Nearest Airport: Springfield-Branson National Airport (7.5 mi.)
Nearest Commercial Airport: Springfield-Branson National Airport (7.5 mi.)
Rail Served: No
Rail Served By: Unknown
Rail Accessible: No
Rail Infrastructure in Place: No

Utilities

Electric: City Utilities
Natural Gas: City Utilities
Water: City Utilities
Sewer: City of Springfield Environmental Services
Telecommunications: SpringNet - Division of City Utilities

Property Images



Subash Alias | CEO | Missouri Partnership
120 S. Central Ave, Suite 1535 | Saint Louis, MO 63105 | (877) 725-0949 | Subash@MissouriPartnership.com

LocationOne® Copyright 2001-2025 Global Location Technologies. This information has been secured from sources we believe to be reliable, but we make no representation or warranties, expressed or implied, as to the accuracy of the information.