



Zoning:	Commercial, Retail
Topography:	Mostly flat
Within City Limits:	Yes
Sale Price:	\$180,000
Last Updated:	Jun 2, 2025

Economic Development Contact

Marcia Hartman
City of Derby, Kansas
611 Mulberry Rd
Derby, Kansas 67037
(316) 788-3081 | marciahartman@derbyweb.com

Realtor/Owner Contact

Maurice Sheets
J.P. Weigand Realtors
(316) 292-3972 | msheets@weigand.com

Property and Area Description

- Located in Derby • 326' of frontage along K-15 highway • Western edge of property borders BNSF railway • Nearby businesses include: Diggin Inn Pet Resort, O'Reilly Auto Parks, McDonald's, Taco Bell, Citizens bank of Kansas, and more

Population



Source: ESRI®, 2025

Households

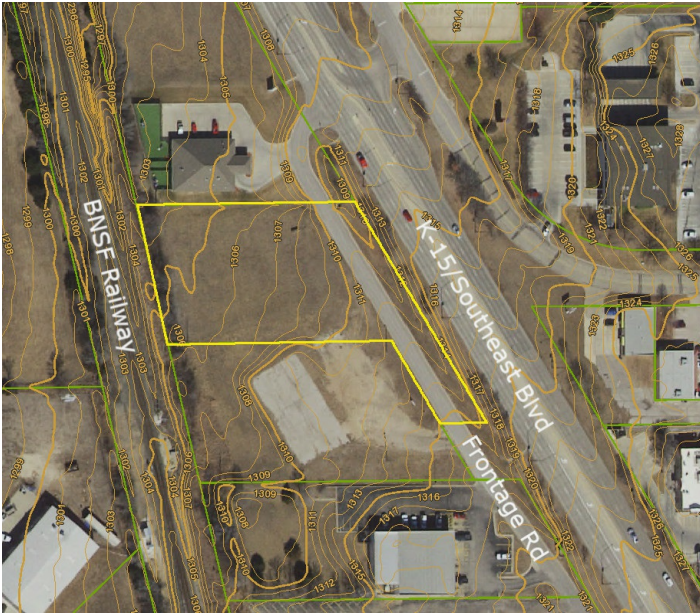


Source: ESRI®, 2025

Transportation

Nearest Highway: K-15 (.04 mi.)
Rail Served: Unknown
Rail Served By: Unknown
Rail Accessible: Unknown
Rail Infrastructure in Place: Unknown

Property Images



Marcia Hartman | Economic Development Manager | City of Derby
611 N Mulberry Rd | Derby, KS 67037 | (316) 788-3081 | marciahartman@derbyks.gov