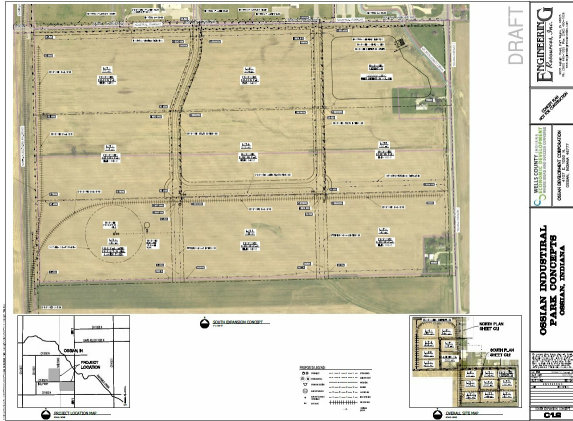


Ossian Industrial Park-South (AEPIN)

CR 850 | Ossian, IN | US | Wells County

Available Acres: 120 | Sale Price: \$12,000



Property and Area Description

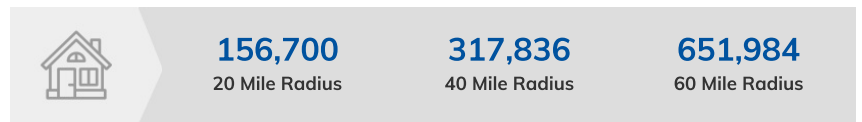
This property totals nearly 120 acres and is bordered on the north by CR 850 South, on the east by State Road 1, and on the west by the Norfolk and Southern rail line. All 120 acres are contiguous and developable. This site is within six miles of I-469 via State Road 1. It is 12.5 miles from I-69 via SR 1/SR 224. Direct access to SR 1 is through the CR 850 South access point. Phase 1, wetland, and geo-tech testing will be completed in the fall of 2013.

Population



Source: ESRI®, 2024

Households



Source: ESRI®, 2024

Zoning:	Industrial-Light
Topography:	Level
Setting:	Agricultural Land
Within City Limits:	No
Sale Price:	\$12,000
Sale Price Note:	12000
Last Updated:	Jul 24, 2023

Economic Development Contact

Ashley N. Savieo, CEcD
AEP - Indiana Michigan Power
110 East Wayne Street
Fort Wayne, IN 46802
(260) 408-3629 | ansavieo@aep.com

Transportation

Nearest Highway: US 27 (11.00 mi.)
Nearest Interstate: I-469 (6.00 mi.)
Nearest Airport: Fort Wayne International Airport (7.00 mi.)
Nearest Commercial Airport: Fort Wayne International Airport (7.00 mi.)
Rail Served: Yes
Rail Served By: Norfolk Southern Railway
Rail Infrastructure in Place: No

Utilities

Electric: AEP - Indiana Michigan Power
Natural Gas: NIPSCO
Water: Town of Ossian
Sewer: Town of Ossian
Telecommunications: Available

