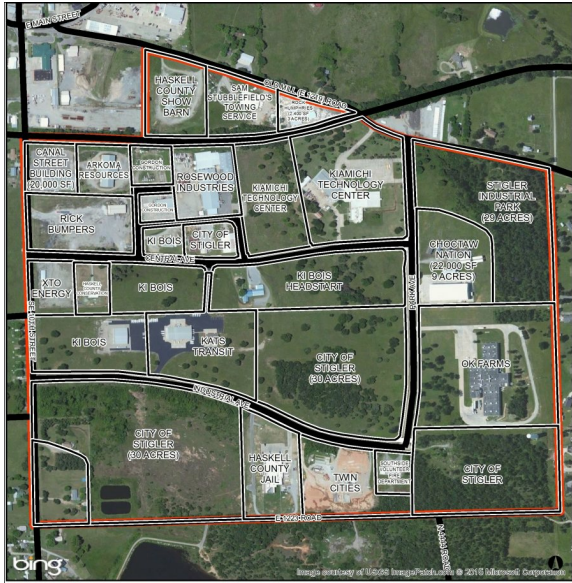


State Highway 9 South | Stigler, OK | US | Haskell County  
Available Acres: 90 |



The Stigler Industrial Park is located two blocks south of State Highway 9. It has flat topography and is fully developed with an industrial access road and all utilities. Kiamichi Technology Center is located in the park to provide training for business and industry and to serve the workforce in the area. Several State and local incentives are available.

26,129  
20 Mile Radius

210,671  
40 Mile Radius

583,720  
60 Mile Radius

Radius	Number of Homes for Sale
20 Mile Radius	10,499
40 Mile Radius	82,818
60 Mile Radius	229,175

<b>Zoning:</b>	Industrial-Light
<b>Topography:</b>	Flat
<b>Setting:</b>	Industrial Park
<b>Within City Limits:</b>	Yes
<b>Lease Rate Note:</b>	Negotiable
<b>Last Updated:</b>	Jul 24, 2023

**Janet P. Smith**  
AEP - Public Service Company of Oklahoma  
212 East 6th Street  
Tulsa, OK 74119  
(918) 599-2405 | [jpsmith1@aep.com](mailto:jpsmith1@aep.com)

**Nearest Highway:** I-40 (20.00 mi.)  
**Nearest Interstate:** I-40 (20.00 mi.)  
**Nearest Airport:** Stigler Regional Airport (2.00 mi.)  
**Nearest Commercial Airport:** Fort Smith Regional Airport (45.00 mi.)  
**Rail Served:** No  
**Rail Served By:** Other  
**Rail Infrastructure in Place:** No

**Electric:** AEP - Public Service Company of Oklahoma  
**Natural Gas:** Oklahoma Natural Gas Company  
**Water:** City of Stigler  
**Sewer:** City of Stigler  
**Telecommunications:** Available



Property Images

