

# 320-Acre Lawton: Oklahoma Southwest Rail Industrial Park (AEPOK)

Goodyear and Lee Boulevards | Lawton, OK | US | Comanche County  
 Available Acres: 320 |



## WEST SIDE INDUSTRIAL PARK LAWTON, OK



## Property and Area Description

This 320+ acre site is located in Lawton / Fort Sill, Comanche County, Oklahoma, in a thriving industrial park with a population of approximately 100,000 in the MSA. The park is home to companies, such as Goodyear Tire and Rubber, Bar-S Foods, Republic Paperboard, Silverline Plastics, BMT and Pepper Creek Farms. The park has full utilities, access to rail, and is located eight miles from I-44. Adjacent property includes a 480 acre site and 235 acre site.

## Population



Source: ESRI®, 2024

Zoning:	Industrial-Heavy
Topography:	Flat to rolling
Setting:	Industrial Park
Within City Limits:	Yes
Lease Rate Note:	Not Available for Lease
Last Updated:	Dec 27, 2023

## Households



Source: ESRI®, 2024

## Economic Development Contact

**Janet P. Smith**  
 AEP - Public Service Company of Oklahoma  
 212 East 6th Street  
 Tulsa, OK 74119  
 (918) 599-2405 | jpsmith1@aep.com

## Transportation

**Nearest Highway:** I-44 (8.00 mi.)  
**Nearest Interstate:** I-44 (8.00 mi.)  
**Nearest Airport:** Lawton-Fort Sill Regional Airport (7.00 mi.)  
**Nearest Commercial Airport:** Lawton-Fort Sill Regional Airport (7.00 mi.)  
**Rail Served:** Yes  
**Rail Served By:** Other  
**Rail Infrastructure in Place:** Possible

## Utilities

**Electric:** AEP - Public Service Company of Oklahoma  
**Natural Gas:** CenterPoint Energy  
**Water:** City of Lawton  
**Sewer:** City of Lawton  
**Telecommunications:** Available

# Property Images

## WEST SIDE INDUSTRIAL PARK LAWTON, OK

PUBLIC SERVICE  
COMPANY OF  
OKLAHOMA

Map For Planning Purposes Only

### SITES



ARP ECONOMIC & BUSINESS DEVELOPMENT | 1269

Source: American Electric Power (2019)

MAPBOX.COM

### PROXIMITY



### STATE OVERVIEW



### Lawton, Oklahoma

The Comanche County Industrial Development Authority owns a 320 acre industrial site located in the Westside Industrial Park. The site is rail served and all utilities are present. Major tenants at the park include Goodyear Tire and Rubber, Republic Paperboard, Bar-S Foods, Silverline Plastics, BMT and Pepper Creek Farms. These sites are within the city limits of Lawton.

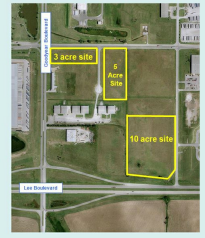
For more information, contact the Lawton Economic Development Corporation at (580) 354-0023.



### Lawton, Oklahoma

The Lawton Economic Development Corporation owns 10 acre, 5 acre, and 3 acre industrial sites located in the Westside Industrial Park. These sites have all utilities present and are shovel ready. Major tenants at the park include Goodyear Tire and Rubber, Republic Paperboard, Bar-S Foods, Silverline Plastics, BMT and Pepper Creek Farms. These sites are within the city limits of Lawton.

For more information, contact the Lawton Economic Development Corporation at (580) 354-0023.

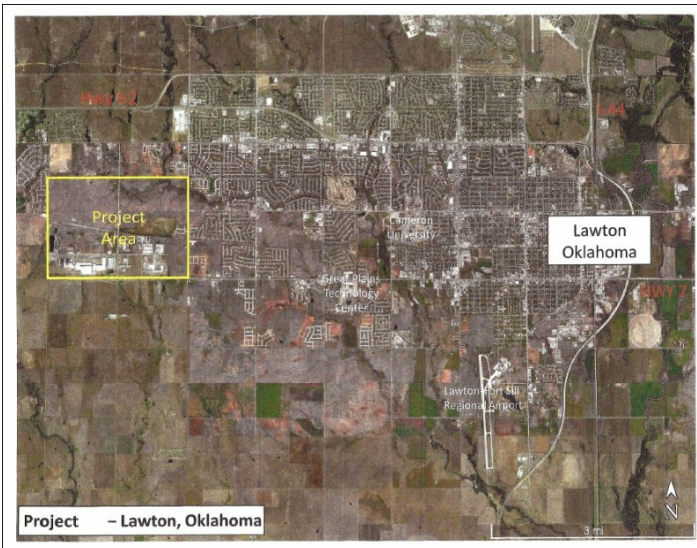


### Lawton, Oklahoma

The Comanche County Industrial Development Authority owns 480 acres of land immediately south of the Westside Industrial Park.

This land is available for development. This site has utilities close by and can be subdivided to meet the client's needs. Major tenants at the park include Goodyear Tire and Rubber, Republic Paperboard, Bar-S Foods, Silverline Plastics, BMT and Pepper Creek Farms. This site is within the city limits of Lawton.

For more information, contact the Lawton Economic Development Corporation at (580) 354-0023.



Project - Lawton, Oklahoma