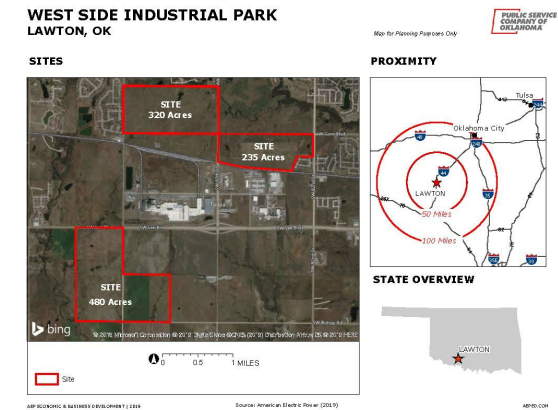


480+-Acre Lawton: Oklahoma Southwest Rail Industrial Park (AEPOK)

112th Street and Lee Boulevards | Lawton, OK | US | Comanche County
Available Acres: 480 |



Zoning:	Industrial-Heavy
Topography:	Flat to rolling
Setting:	Industrial Park
Within City Limits:	Yes
Lease Rate Note:	Not Available for Lease
Last Updated:	Dec 27, 2023

Economic Development Contact

Janet P. Smith
AEP - Public Service Company of Oklahoma
212 East 6th Street
Tulsa, OK 74119
(918) 599-2405 | jpsmith1@aep.com

Property and Area Description

480+ acre site is located in Lawton / Fort Sill, Comanche County, Oklahoma, in a thriving industrial park with a population of approximately 100,000 in the MSA. The park is home to companies, such as Goodyear Tire and Rubber, Bar-S Foods, Republic Paperboard, Silverline Plastics, BMT and Pepper Creek Farms. The park has utilities close by, can be subdivided to meet client's needs, and is within city limits of Lawton. Site is adjacent to 320 acre site and 235 acre site.

Population

	116,867 20 Mile Radius	211,248 40 Mile Radius	448,395 60 Mile Radius
--	----------------------------------	----------------------------------	----------------------------------

Source: ESRI®, 2025

Households

	43,742 20 Mile Radius	81,629 40 Mile Radius	172,376 60 Mile Radius
--	---------------------------------	---------------------------------	----------------------------------

Source: ESRI®, 2025

Transportation

Nearest Highway: I-44 (8.00 mi.)
Nearest Interstate: I-44 (8.00 mi.)
Nearest Airport: Lawton-Fort Sill Regional Airport (7.00 mi.)
Nearest Commercial Airport: Lawton-Fort Sill Regional Airport (7.00 mi.)
Rail Served: No
Rail Served By: Other
Rail Accessible: Unknown
Rail Infrastructure in Place: Possible

Utilities

Electric: AEP - Public Service Company of Oklahoma
Natural Gas: CenterPoint Energy
Water: City of Lawton
Sewer: City of Lawton
Telecommunications: Available

Property Images

WEST SIDE INDUSTRIAL PARK
LAWTON, OK

SITES



MAP ECONOMIC & BUSINESS DEVELOPMENT | 2019

Source: American Electric Power (2019)

PUBLIC SERVICE
COMPANY OF
OKLAHOMA

Map for Planning Purposes Only

PROXIMITY



STATE OVERVIEW



MPED.COM

Lawton, Oklahoma

The Comanche County Industrial Development Authority owns a 320 acre industrial site located in the Westside Industrial Park. The site is rail served and all utilities are present. Major tenants at the park include Goodyear Tire and Rubber, Republic Paperboard, Bar-S Foods, Silverline Plastics, BMT and Pepper Creek Farms. These sites are within the city limits of Lawton. For more information, contact the Lawton Economic Development Corporation at (580) 354-0023.



Lawton, Oklahoma

The Lawton Economic Development Corporation owns 10 acre, 5 acre, and 3 acre industrial sites located in the Westside Industrial Park. These sites have all utilities present and are shovel ready. Major tenants at the park include Goodyear Tire and Rubber, Republic Paperboard, Bar-S Foods, Silverline Plastics, BMT and Pepper Creek Farms. These sites are within the city limits of Lawton. For more information, contact the Lawton Economic Development Corporation at (580) 354-0023.



Lawton, Oklahoma

The Comanche County Industrial Development Authority owns 480 acres of land immediately south of the Westside Industrial Park. This land is available for development. This site has utilities close by and can be subdivided to meet the client's needs. Major tenants at the park include Goodyear Tire and Rubber, Republic Paperboard, Bar-S Foods, Silverline Plastics, BMT and Pepper Creek Farms. This site is within the city limits of Lawton. For more information, contact the Lawton Economic Development Corporation at (580) 354-0023.

