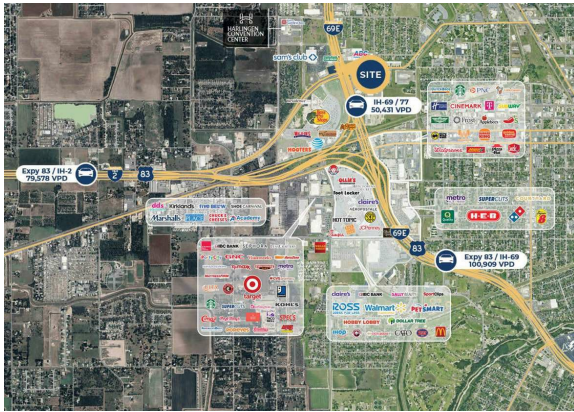


Sam's Club™s Club Pad

Jefferson Valley Fair & N Expressway 77 | Harlingen, TX | US | Cameron County

Available Acres: 1.28 |



Zoning:

Last Updated: Jun 9, 2025

Realtor/Owner Contact

Brian Smith

| brian.smith@meritcre.com

Population



154,271

10 Mile Radius

385,018

20 Mile Radius

915,114

30 Mile Radius

Source: ESRI®, 2024

Households



53,622

10 Mile Radius

122,157

20 Mile Radius

287,034

30 Mile Radius

Source: ESRI®, 2024

Transportation

Rail Served: No

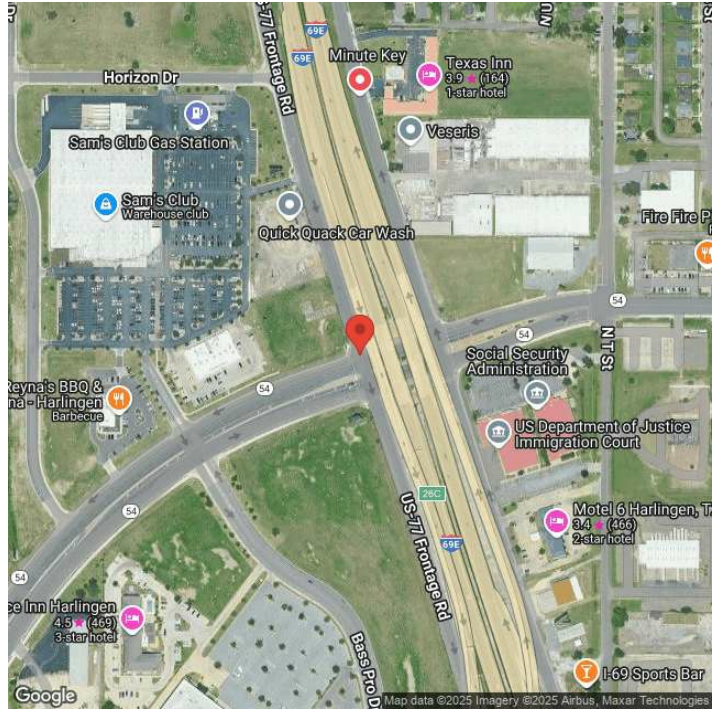
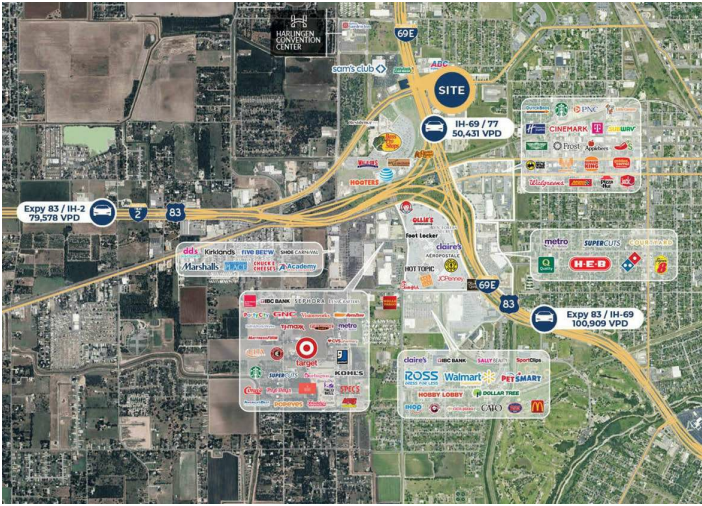
Rail Accessible: No

Rail Infrastructure in Place: Unknown

Utilities

Electric: American Electric Power

Property Images



Beverly Loftus | Harlingen Economic Development Corporation
2424 Boxwood St. | Harlingen, TX 78550 | (956) 216-5081 | bloftus@harlignedc.com