



Zoning:

Last Updated: May 7, 2025

Economic Development Contact

Julie Powers
City of St. Peters, Missouri
P. O. Box 9
St. Peters, Missouri 63376
(636) 477-6600 | jpower@stpetersmo.net

Cathy Pratt
Cathy Pratt
P. O. Box 9
St. Peters, Missouri 63376
(636) 477-6600 | cpratt@stpetersmo.net

Realtor/Owner Contact

Kevin Eskridge

Property and Area Description

36 Acres Lot Sizes and Locations Set to Buyers Specifications, Pre Approved Curb Cuts, All Utilities Available, Level, and Zoned for Business Use

Population



Source: ESRI®, 2024

Households



Source: ESRI®, 2024

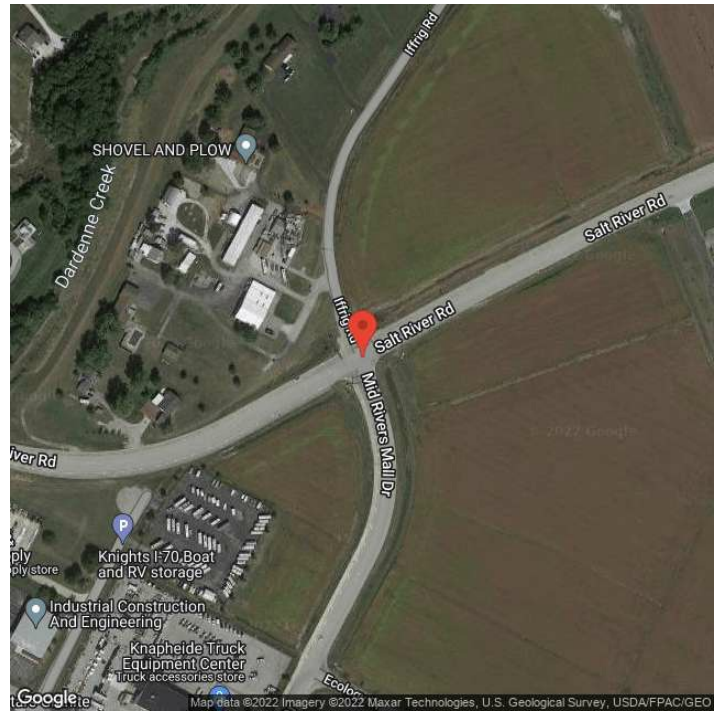
Transportation

Rail Served: No
Rail Accessible: No
Rail Infrastructure in Place: Unknown

Utilities

Electric: Ameren

Property Images



Scott J. Drachnik | President & CEO | EDC Business & Community Partners
5988 Mid Rivers Mall Drive | St. Charles, MO 63304 | (636) 229-5281 | sdrachnik@edcsc.com