

Nebraska Ave & S 35th St | Council Bluffs, IA | US | Pottawattamie County
Available Acres: 11 |

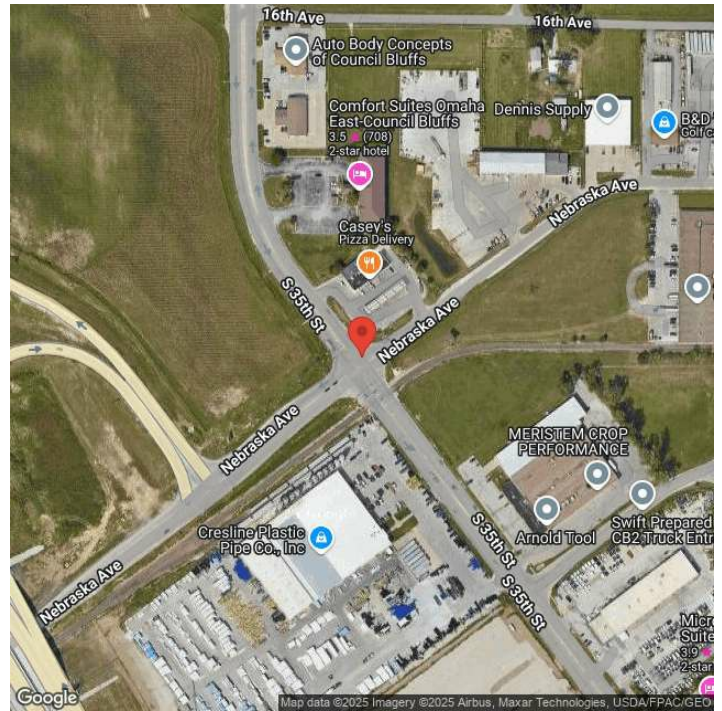


Paula Hazlewood
Advanced Southwest Iowa Corporation
149 W. Broadway
Council Bluffs, Iowa 51503
(402) 960-8505 |
phazlewood@selectgreateromaha.com

Mandi Backhaus

Rail Served: Yes
Rail Served By: Union Pacific Railroad
Rail Accessible: Yes
Rail Infrastructure in Place: Unknown
Rail Contact: Darren Wisniski
Rail Contact Phone: 402-672-1983
Rail Contact Email: djwisnis@up.com

Property Images



Angie Baber | Director, Economic Development | Greater Omaha Economic Development Partnership
808 Conagra Dr. | Omaha, NE 68102 | ababer@selectgreateromaha.com