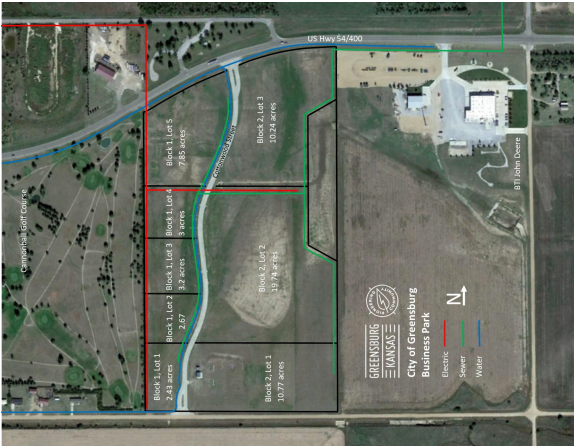


Greensburg Business Park

100 S. Cottonwood St. | Greensburg, KS | US | Kiowa County

Available Acres: 59.9 | Sale Price: \$1



Zoning:	Industrial
Topography:	Flat
Setting:	Industrial Park
Within City Limits:	Yes
Site Dimensions:	2437x1321
Sale Price:	\$1
Last Updated:	Mar 11, 2024

Economic Development Contact

Stacy Barnes
City of Greensburg
300 S. Main
Greensburg, Kansas 67054
(620) 723-2751 | administrator@greensburgks.org

Realtor/Owner Contact

Stacy Barnes
City of Greensburg
620-723-2751 | administrator@greensburgks.org

Property and Area Description

8 parcels totaling nearly 60 total acres. Open property with utilities on-site.

Population

	1,943	3,220	13,246
	10 Mile Radius	20 Mile Radius	30 Mile Radius

Source: ESRI®, 2024

Households

	766	1,283	5,546
	10 Mile Radius	20 Mile Radius	30 Mile Radius

Source: ESRI®, 2024

Transportation

Nearest Highway: US 54/400 (0 mi.)
Nearest Interstate: I-70, Hays, KS or I-235 Wichita, KS (100 mi.)
Ingress/Egress Notes: Business Park is located right on US 54/400 with driveway ingress/egress
Nearest Airport: Pratt, KS or Dodge City, KS (30 miles mi.)
Nearest Commercial Airport: Eisenhower National Airport, Wichita, KS (100 miles mi.)
Rail Served: No
Rail Served By: Unknown
Rail Accessible: Unknown
Rail Infrastructure in Place: No

Utilities

Electric: City of Greensburg
Natural Gas: Kansas Gas Service
Water: City of Greensburg
Sewer: City of Greensburg

Property Images

