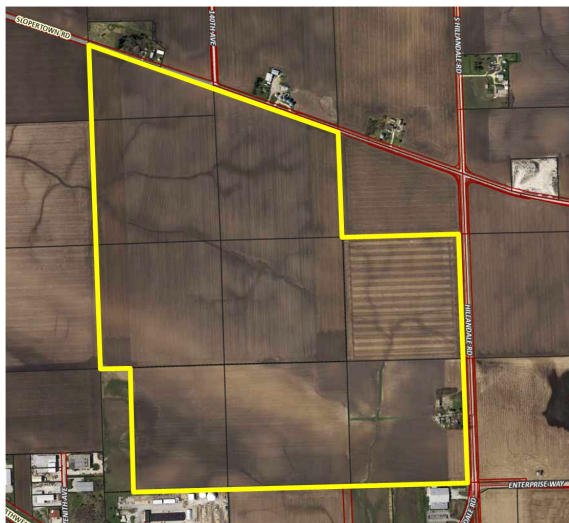


Large Davenport Industrial Site

SWC of Slopertown Road and Hillandale Road | Davenport, IA | US | Scott County

Available Acres: 329.48 |



Zoning:	Industrial
Site Dimensions:	3,920 ft (L) x 4,223 ft (H)
Sale Price Note:	Price per Acre ranges from \$50,000 - \$59,995
Last Updated:	Dec 19, 2023

Economic Development Contact

Jenelle Wolber
Quad Cities Chamber
331 W. 3rd Street, Suite 100
Davenport, IA 52801
(563) 823-2679 | jwolber@quadcitieschamber.com

Susanne Knutsen
City of Davenport
226 West 4th Street
Davenport, IA 52801
(563) 326-6179 |
Susanne.Knutsen@davenportiowa.com

Property and Area Description


Large 329-acre site in northwest Davenport located adjacent to Eastern Iowa Industrial Center. This property has two landowners with 147 acres being priced at \$50K/acre and the remaining 182 acres being priced at \$59.9K/acre.

Population

	199,058 10 Mile Radius	337,913 20 Mile Radius	447,043 30 Mile Radius
---	----------------------------------	----------------------------------	----------------------------------

Source: ESRI®, 2024

Households

	83,394 10 Mile Radius	142,671 20 Mile Radius	188,513 30 Mile Radius
---	---------------------------------	----------------------------------	----------------------------------

Source: ESRI®, 2024

Transportation

Nearest Highway: US-61 (3.9 mi.)
Nearest Interstate: I-80 (1.2 mi.)
Nearest Airport: Davenport Municipal Airport (3.2 mi.)
Nearest Commercial Airport: Quad Cities International Airport (MLI) (16.6 mi.)
Rail Served: No
Rail Served By: Unknown
Rail Type: Active
Rail Accessible: Yes
Rail Infrastructure in Place: Yes
Rail Contact: Davenport Industrial Railroad

Utilities

Electric: MidAmerican Energy Co.
Natural Gas: MidAmerican Energy Co.
Water: Iowa American Water
Sewer: City of Davenport
Telecommunications: Central Scott Telephone

Property Images

