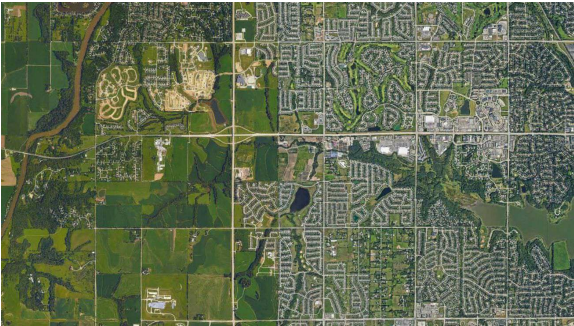


Iron Bluff

4103 South 205th Street | Omaha, NE | US | Douglas County
Available Acres: 32.21 |



Zoning:
Last Updated: Jul 18, 2025

Economic Development Contact

Angie Baber
Greater Omaha Economic Development Partnership
808 ConAgra Drive, Ste 400`
Omaha, NE 68102
| ababer@selectgreateromaha.com

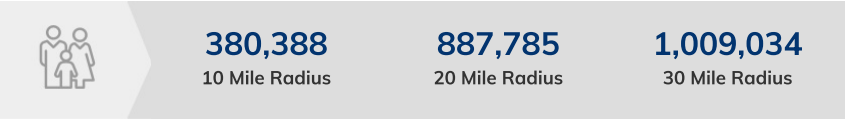
Realtor/Owner Contact

Adam Maurer

Property and Area Description

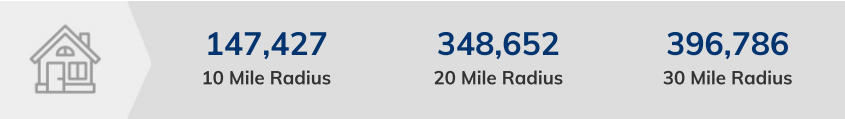
For Sale

Population



Source: ESRI®, 2024

Households



Source: ESRI®, 2024

Transportation

Rail Served: No
Rail Accessible: No
Rail Infrastructure in Place: Unknown

Property Images

