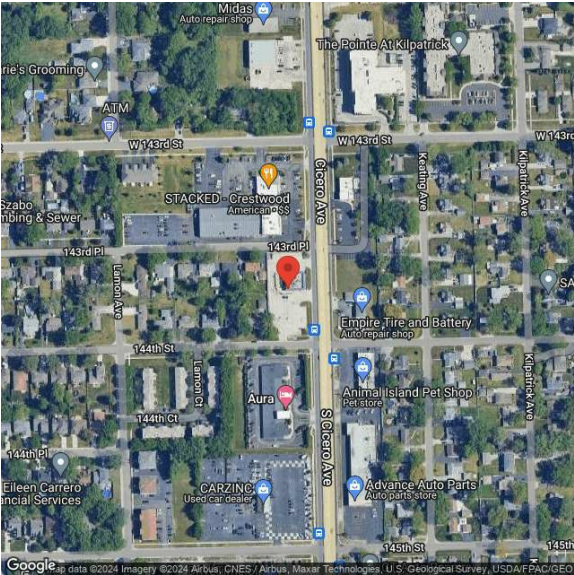


14340 South Cicero Avenue
14340 S Cicero Ave | Midlothian, IL | US | Cook County
Available Acres: 0.74 |



Property and Area Description

Land For Sale Prime Development Opportunity Zoned B-3 Business District. 2,860 square foot building on .74 acres of land. Located along Cicero Ave, a major north/west retail thoroughfare. Directly east of the Midlothian Country Club.

Population

	1,013,921 10 Mile Radius	3,774,917 20 Mile Radius	6,520,780 30 Mile Radius
---	------------------------------------	------------------------------------	------------------------------------

Source: ESRI®, 2024

Households

	388,951 10 Mile Radius	1,504,567 20 Mile Radius	2,603,215 30 Mile Radius
---	----------------------------------	------------------------------------	------------------------------------

Source: ESRI®, 2024

Zoning:
Last Updated: Aug 26, 2024

Economic Development Contact

Terry Stephens
Village of Midlothian
14801 South Pulaski Rd
Midlothian, Illinois 60445
(708) 389-0200 | admin@villageofmidlothian.net

Realtor/Owner Contact

David Erickson
| david.erickson@cbre.com

Transportation

Rail Served: Yes
Rail Served By: Union Pacific Railroad
Rail Accessible: Yes
Rail Infrastructure in Place: Unknown
Rail Contact: Ryan Wee
Rail Contact Phone: 262-277-8725
Rail Contact Email: rwwee@up.com