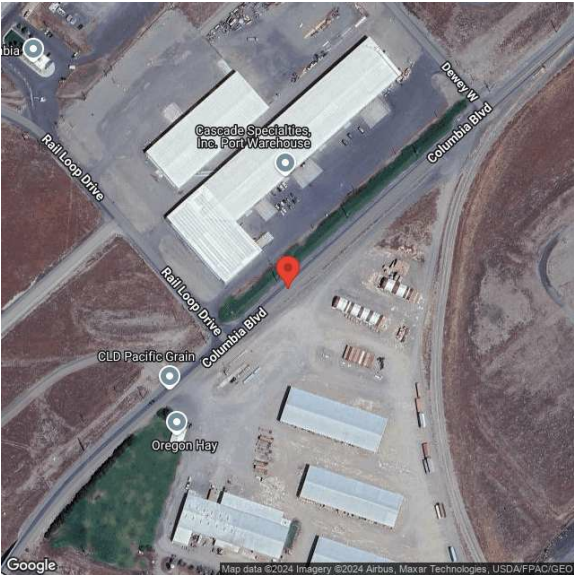


71410 E. Columbia Blvd.
71410 Columbia Blvd | Boardman, OR | US | Morrow County
Available Acres: 914,760 |



Zoning: Industrial
Last Updated: Nov 20, 2024

Realtor/Owner Contact
Chris Stark
| chris.stark@avisonyoung.com

Property and Area Description

The data center market in Boardman, Oregon is distinct due to its strategic location and large scale adjacent to the Columbia River. Boardman is close to important Pacific Northwest markets, including Portland and Seattle, making it a good place for data infrastructure. The region also has a strong power grid, low-latency access to undersea cables, and excellent connectivity to government agencies and major metropolitan areas, making it a good place for collocation. As of June 2024, the Boardman area had 372.2 MW of data center space under construction, with 91.8% of it pre-leased. This limited supply has led to rising rental rates for all sizes of space. The market is also being fueled by continued interest from hyperscale and AI companies. Property Description: +/-914,760 SF of Data Center land. The site is not entitled, plans are conceptual. Up to 180,000 SF of data center to be built with up to 50 MW of power. The land is zoned for Industrial and there is abundant fiber.

Population

	9,744	46,010	88,890
	10 Mile Radius	20 Mile Radius	30 Mile Radius

Source: ESRI®, 2024

Households

	3,148	14,946	29,426
	10 Mile Radius	20 Mile Radius	30 Mile Radius

Source: ESRI®, 2024

Transportation

Rail Served: Yes
Rail Served By: Union Pacific Railroad
Rail Accessible: Yes
Rail Infrastructure in Place: Unknown
Rail Contact: Maureen Haney
Rail Contact Phone: 916-208-1731
Rail Contact Email: mphaney@up.com