

Olive & Graeser

11012 Olive Blvd | Creve Coeur, MO | US | St. Louis County

Available Acres: 4.56 |

STLPARTNERSHIP

BUSINESS DEVELOPMENT



Population



10,402

1 Mile Radius

65,424

3 Mile Radius

190,014

5 Mile Radius

Source: ESRI®, 2024

Households



4,588

1 Mile Radius

28,220

3 Mile Radius

80,940

5 Mile Radius

Source: ESRI®, 2024

Transportation

Rail Served: No

Rail Accessible: No

Rail Infrastructure in Place: Unknown

Utilities

Electric: Ameren

Zoning:

Last Updated:

Apr 25, 2025

Economic Development Contact

Michelle Stuckey

St. Louis Economic Development Partnership

120 S. Central, Suite 1200

St. Louis, MO 63105

(314) 615-7663 | mstuckey@stlpartnership.com

Jason Archer

St. Louis Economic Development Partnership

120 S. Central, Suite 1200

St. Louis, MO 63105

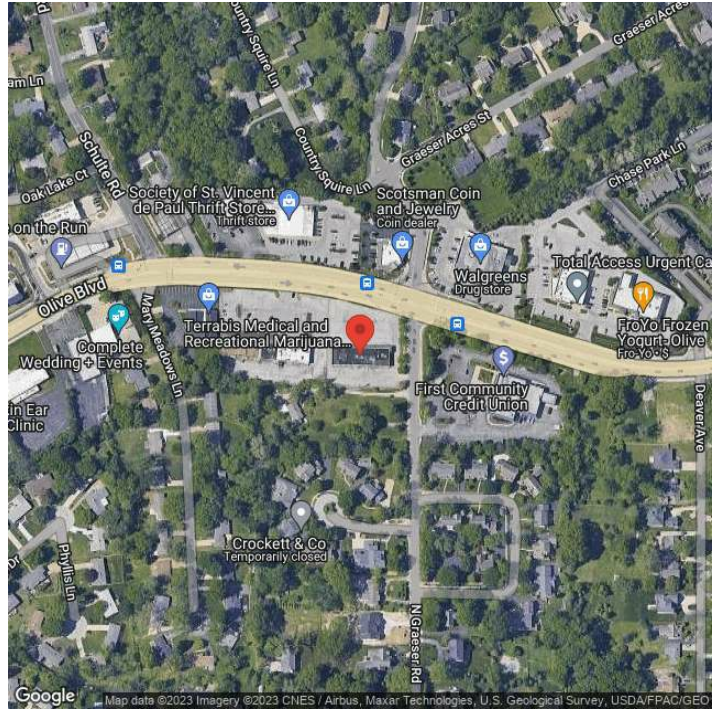
(314) 615-7663 | jarcher@stlpartnership.com

Realtor/Owner Contact

Louis Copilevitz

| lcopilevitz@gershmancre.com

Property Images



Zinnia Ron-Ferguson | Data Analyst Project Manager | St. Louis Economic Development Partnership
120 S. Central Ave. | St. Louis, MO 63105 | (314) 874-2557 | zron-ferguson@stlpartnership.com