

3830 S Grand Blvd
3830 S Grand Blvd | St. Louis, MO | US | St. Louis City County
Available Acres: 1.2 | Sale Price: \$940,896



Zoning:	
Sale Price:	\$940,896
Last Updated:	May 7, 2025

Economic Development Contact

Shavette Wayne-Jones
St. Louis Development Corporation
1520 Market, Suite 2000
St. Louis, MO 63103
(314) 657-3457 | waynes@stlouis-mo.gov

Realtor/Owner Contact

Jay Travis
| jay.travis@avisonyoung.com

Population

	31,166 1 Mile Radius	145,002 3 Mile Radius	300,598 5 Mile Radius
--	-------------------------	--------------------------	--------------------------

Source: ESRI®, 2024

Households

	13,851 1 Mile Radius	70,620 3 Mile Radius	147,267 5 Mile Radius
--	-------------------------	-------------------------	--------------------------

Source: ESRI®, 2024

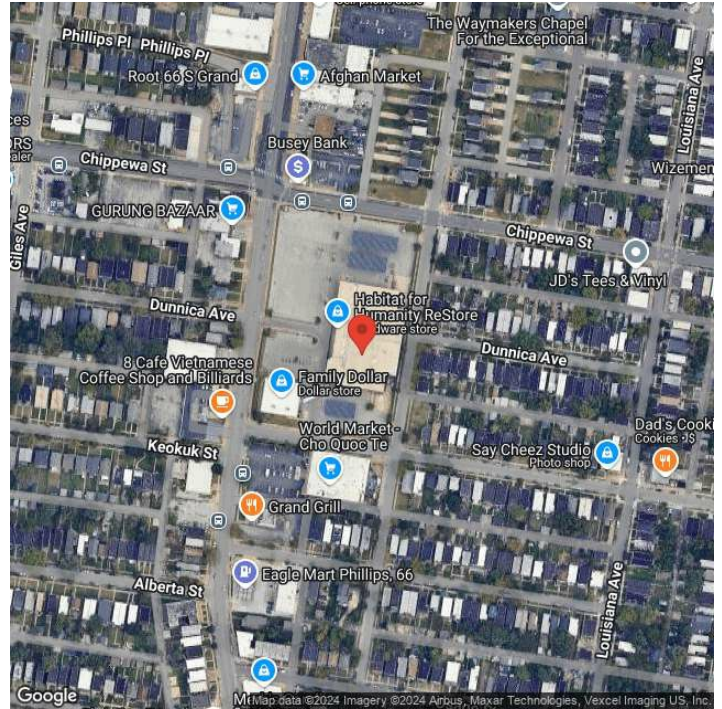
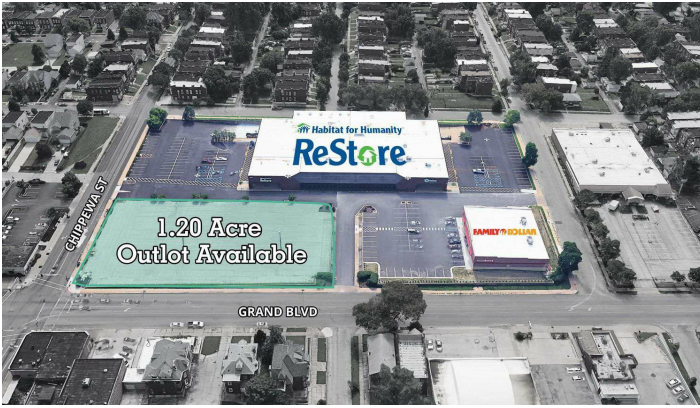
Transportation

Rail Served: No
Rail Accessible: No
Rail Infrastructure in Place: Unknown

Utilities

Electric: Ameren

Property Images



Zinnia Ron-Ferguson | Data Analyst Project Manager | St. Louis Economic Development Partnership
120 S. Central Ave. | St. Louis, MO 63105 | (314) 874-2557 | zron-ferguson@stlpartnership.com