



Zoning:	
Sale Price:	\$6,100,000
Last Updated:	Jul 18, 2025

Economic Development Contact

Shavette Wayne-Jones
St. Louis Development Corporation
1520 Market, Suite 2000
St. Louis, MO 63103
(314) 657-3457 | waynes@stlouis-mo.gov

Realtor/Owner Contact

Will Mura
| william.mura@cbre.com

Property and Area Description

Site Details + Site 1: 3.66 Acres + 700 S 1st Street: 159,560 SF + Site 2: 4.64 Acres + 800 S 1st Street: 93,262 SF + 900 S 1st Street: 31,320 SF + 910 S 1st Street: 65,776 SF + 911 S Wharf Street: 11,717 SF + Zoning - L - Jefferson Memorial District + Possible uses: multifamily, office, assembly, distribution, transloading + Union Pacific served + Levee Protected + Quick access to Interstates: I-70, I-64, I-55, I-44 + Adjacent to the Mississippi Riverfront + Located within Gateway South redevelopment zone + Sale Price: \$6,100,000* (Seller would consider selling individual parcels)

Population

	6,941	66,038	193,576
	1 Mile Radius	3 Mile Radius	5 Mile Radius

Source: ESRI®, 2024

Households

	4,096	33,918	95,829
	1 Mile Radius	3 Mile Radius	5 Mile Radius

Source: ESRI®, 2024

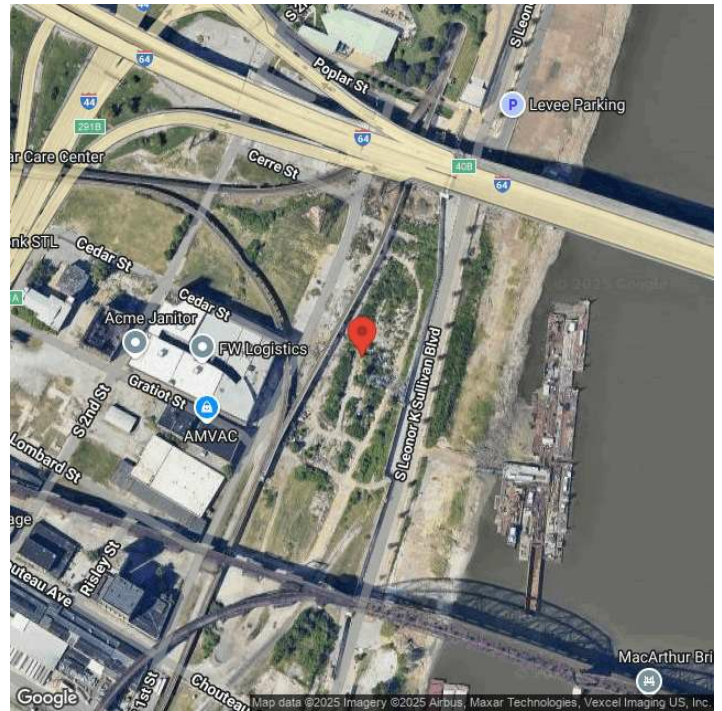
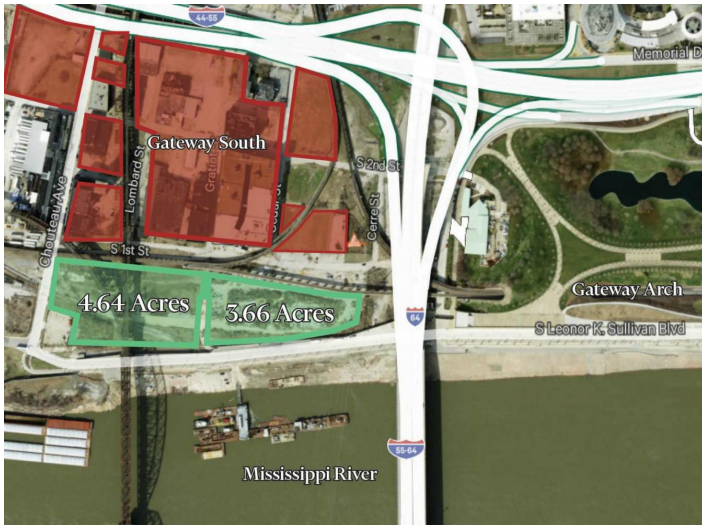
Transportation

Rail Served: Yes
Rail Served By: Union Pacific Railroad
Rail Accessible: Yes
Rail Infrastructure in Place: Unknown
Rail Contact: Kate M. Betsworth
Rail Contact Phone: 402-544-3237
Rail Contact Email: kmbetswo@up.com

Utilities

Electric: Ameren

Property Images



Zinnia Ron-Ferguson | Data Analyst Project Manager | St. Louis Economic Development Partnership
120 S. Central Ave. | St. Louis, MO 63105 | (314) 874-2557 | zron-ferguson@stlpartnership.com