



Zoning:	Commercial
Within City Limits:	Yes
Sale Price Note:	Negotiable
Last Updated:	Jan 31, 2024

Economic Development Contact

Hollie Zajicek
City of Norwalk
1104 Sunset Dr
Norwalk, IA 50211
(515) 314-5862 | hzajicek@norwalk.iowa.gov

Realtor/Owner Contact

Michael Coppola & Scott McMurray
Coppola Enterprises
(515) 285-8880 or 515-490-4006 |
mcoppola@coppolainc.com; scott@smcmurray.com

Property and Area Description

- Hwy 28 and Beardsley - Multiple Shovel Ready Lots Available - Tax Abatement Available - Quick Access to I-35 Via HWY 5 Bypass - Commercial & Residential Uses - Approximately 12 Acres Available - Population Approximately: 12,000 - Average HH Income: \$84,626 - Traffic Count: 20,000 VPD & growing

Population

	19,580	328,840	661,348
	3 Mile Radius	10 Mile Radius	20 Mile Radius

Source: ESRI®, 2024

Households

	7,493	137,798	263,248
	3 Mile Radius	10 Mile Radius	20 Mile Radius

Source: ESRI®, 2024

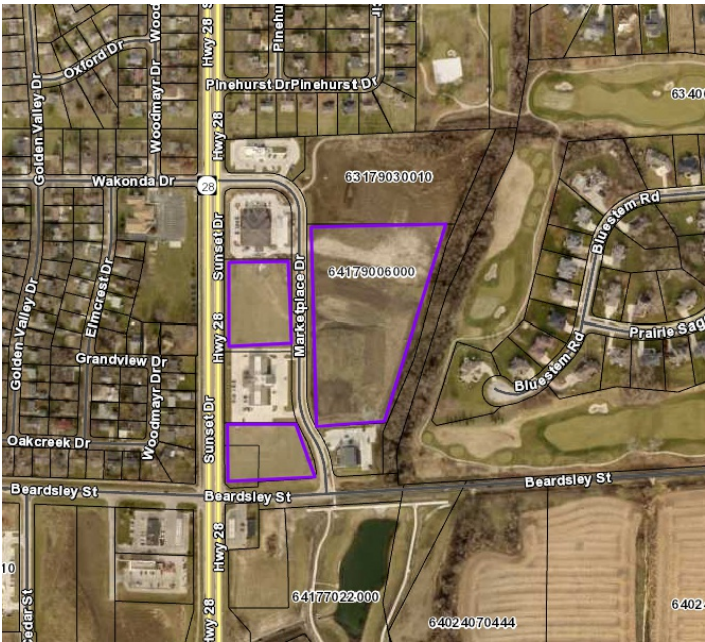
Transportation

Nearest Highway: Highway 5 (1.6 mi.)
Nearest Interstate: I-35 (6.3 mi.)
Nearest Airport: Des Moines International Airport (5 mi.)
Nearest Commercial Airport: Des Moines International Airport (5 mi.)
Rail Served: No
Rail Served By: None
Rail Accessible: No
Rail Infrastructure in Place: No

Utilities

Electric: MidAmerican Energy Company
Natural Gas: MidAmerican Energy Company
Water: City of Norwalk
Sewer: City of Norwalk

Property Images



Hollie Zajicek | Economic Development Director | City of Norwalk
1104 Sunset Dr | Norwalk, IA 50211 | (515) 314-5862 | hzejicek@norwalk.iowa.gov