

Zoning:

C

Last Updated:

May 12, 2025

Realtor/Owner Contact

Brady Lundeen

Property and Area Description

Commercial development located at the corner of Highway 24 and Excel Road featuring lots from 0.94 - 8.73 acres. Zoned C - General & Commercial Services allows for a broad range of commercial uses. Direct connection into Green Valley Industrial Park from Excel Road through center of development. Estimated 15,000+ VPD in rapidly growing area just two miles East of Manhattan city limits.

Population



Source: ESRI®, 2024

Households



Source: ESRI®, 2024

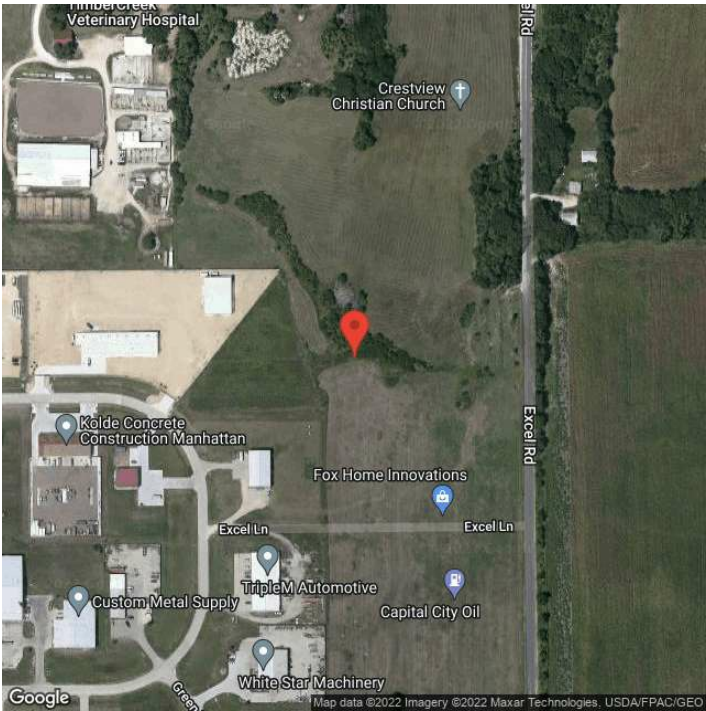
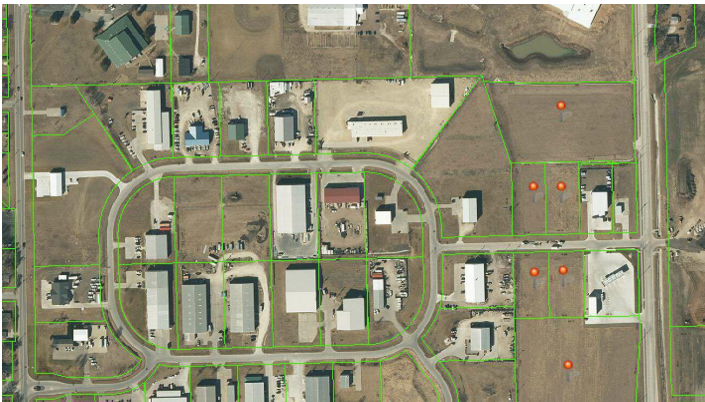
Transportation

Rail Served: Yes  
Rail Served By: Union Pacific Railroad  
Rail Accessible: Yes  
Rail Infrastructure in Place: Unknown  
Rail Contact: Kate M. Betsworth  
Rail Contact Phone: 402-544-3237  
Rail Contact Email: kmbetswo@up.com

Utilities

Electric: Evergy

Property Images



Daryn Soldan | Director | Greater Manhattan Economic Partnership  
501 Poyntz | Manhattan, KS | (785) 776-8829 | daryn@manhattan.org