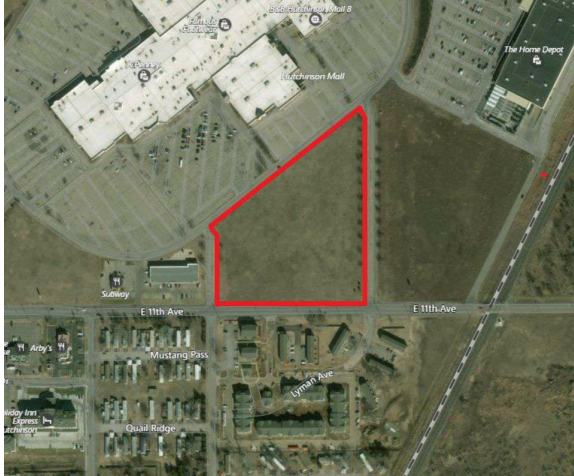


Hutchinson Development Land

Lyman Ave & E 11th Ave | Hutchinson, KS | US | Reno County

Available Acres: 7.84 |



Property and Area Description

High traffic out parcel is ideal for commercial development. Located just East of KS Hwy 61 & 11th. Parcel is south of the Hutchinson Mall, across from Sears.

Population



52,244

10 Mile Radius

65,582

20 Mile Radius

122,794

30 Mile Radius

Source: ESRI®, 2024

Households



21,803

10 Mile Radius

27,140

20 Mile Radius

49,451

30 Mile Radius

Source: ESRI®, 2024

Zoning:

Last Updated: Jul 14, 2025

Economic Development Contact

Kate Quinlan-Laird

Hutchinson/Reno County Chamber of Commerce
117 N. Walnut
Hutchinson, KS 67501
(620) 662-3391 | kateq@hutchchamber.com

Dave Kerr

Dave Kerr
117 N. Walnut
Hutchinson, KS 67501
(620) 662-3391 | davek@hutchchamber.com

Realtor/Owner Contact

NAI Martens

Steven Martens
| smartens@naimartens.com

Transportation

Rail Served: Yes

Rail Served By: Union Pacific Railroad

Rail Accessible: Yes

Rail Infrastructure in Place: Unknown

Rail Contact: Kate M. Betsworth

Rail Contact Phone: 402-544-3237

Rail Contact Email: kmbetswo@up.com

Utilities

Electric: Evergy

Debra Teufel | President/CEO | Greater Hutchinson Economic Development
117 N. Walnut P.O. Box 519 | Hutchinson, KS 67504 | (620) 662-3391 | debrat@hutchchamber.com