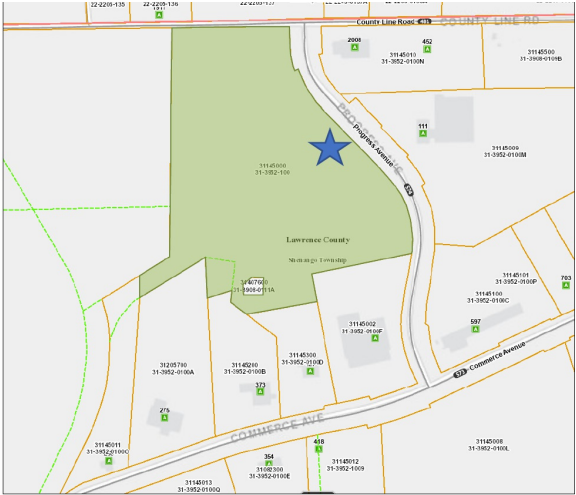


Shenango Industrial Park
111 Frew Mill Rd | Shenango Township, PA | US | Lawrence County
Available Acres: 31.36 | Sale Price: \$20,000



Zoning:	Industrial, Planned Business Park
Adjacent Available Acres:	yes
Setting:	Industrial Park
Within City Limits:	No
Sale Price:	\$20,000
Last Updated:	Aug 18, 2023

Property and Area Description

Corner lot in an established business park, Shenango Industrial Park with frontage on both Progress Avenue and Frew Mill Road. Lot contains approximately 6 buildable acres, all public utilities at site, zoned IP-Industrial Park District.

Population

	20,580 10 Mile Radius	166,443 20 Mile Radius	718,475 30 Mile Radius
---	---------------------------------	----------------------------------	----------------------------------

Source: ESRI®, 2024

Households

	8,314 10 Mile Radius	68,963 20 Mile Radius	305,099 30 Mile Radius
---	--------------------------------	---------------------------------	----------------------------------

Source: ESRI®, 2024

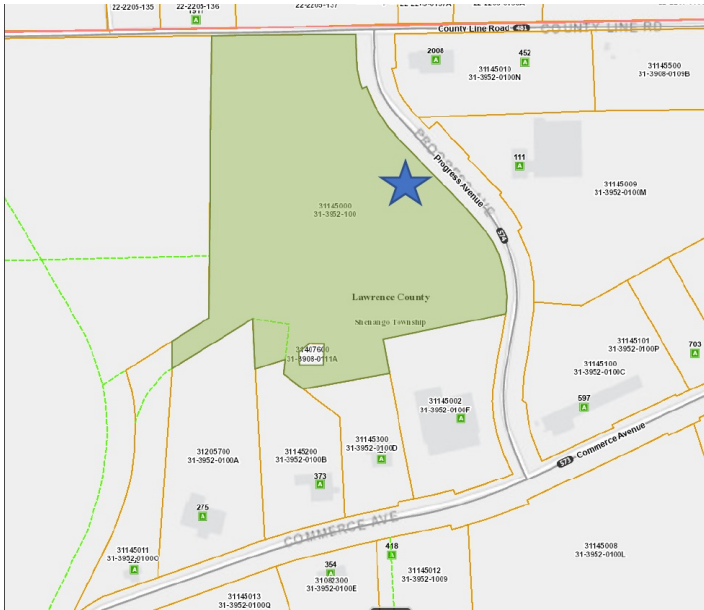
Transportation

- Nearest Highway:** US Route 422 (1.7 mi.)
- Nearest Interstate:** Interstate 79 (8 mi.)
- Nearest Airport:** New Castle Municipal Airport (7.5 mi.)
- Nearest Commercial Airport:** Pittsburgh International Airport (45.1 mi.)
- Rail Served:** No
- Rail Served By:** Unknown
- Rail Accessible:** No
- Rail Infrastructure in Place:** No

Utilities

- Natural Gas:** Columbia Gas
- Water:** Pennsylvania American Wter
- Sewer:** New Castle Sanitation Authority
- Telecommunications:** Verizon

Property Images



Diane L. Richardson, EDPF, CECD | Assistant Director, Business Development | Lawrence County Regional Chamber of Commerce
& Economic Development Corporation
325 East Washington Street | New Castle, PA 16101 | (724) 658-1488 | richardson@lawrencecounty.com

LocationOne® Copyright 2001-2025 Global Location Technologies. This information has been secured from sources we believe to be reliable, but we make no representation or warranties, expressed or implied, as to the accuracy of the information.