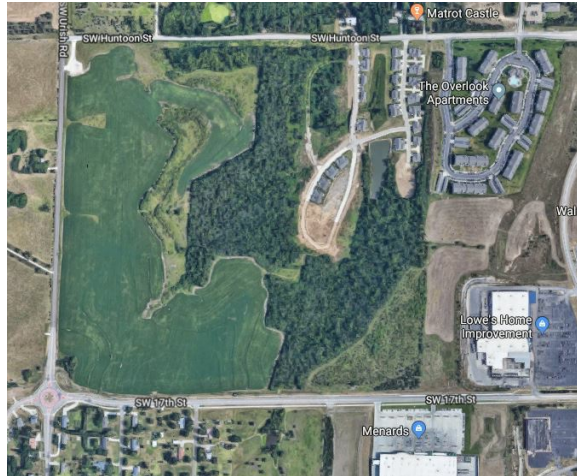


Wrangler Ridge - Lot 2, Block A

NE Corner of 17th St and Urish Rd | Topeka, KS | US | Shawnee County
Available Acres: 6.07 | Sale Price: \$550,000



Property and Area Description

Lot 2, Block A, Zoned: O&I-2, Lot Size: 6.07 acres, Price: \$550,000

Population



162,461
10 Mile Radius

197,256
20 Mile Radius

315,676
30 Mile Radius

Source: ESRI®, 2024

Households



68,345
10 Mile Radius

81,457
20 Mile Radius

131,628
30 Mile Radius

Source: ESRI®, 2024

Zoning:	Office
Within City Limits:	Yes
Sale Price:	\$550,000
Last Updated:	Jun 1, 2021

Economic Development Contact

Ashley Lehman
GO Topeka Economic Partnership
719 S Kansas Ave, Suite 100
Topeka, KS 66603
(785) 640-4168 |
ashley.lehman@topekapartnership.com

Realtor/Owner Contact

Diane Elliott
Broker
(785) 230-2999 | topekahomefinder@aol.com

Transportation

Nearest Highway: Highway 75
Nearest Interstate: I-470
Rail Served: Unknown
Rail Served By: Unknown
Rail Accessible: Unknown
Rail Infrastructure in Place: Unknown